



HANDLE SHANKS

Glass-fibre reinforced polyamide based (PA) technopolymer, black colour, matte finish.

TUBE

Anodised aluminium in natural colour, sandblasted matte finish.

BUTTON

Stainless steel.

IP PROTECTION

IP 65 protection class, according to EN 60529 (see page).

STANDARD EXECUTIONS

Nickel-plated steel bushings, threaded blind hole.

- **RH-FG18-01**: change-over button with integrated green LED.
- **RH-FG18-02**: change-over button 1 with integrated green LED and change-over button 2 with integrated red LED.

FEATURES AND APPLICATIONS

The RH-FG18 handle perfectly combines ergonomics, functionality and safety. One or two push buttons are integrated within the handle with an LED ring around the button that indicates the locked or unlocked status. By pressing the button, the operator requires access to the protected area through external logic (PLC).

This area is unlocked/locked through a solenoid located inside the protected zone and connected by a cable to the logic (PLC).

ACCESSORIES ON REQUEST

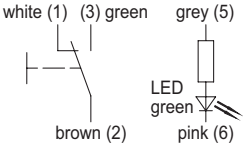
- RHFZ-KS.G08.10: cable with M12x1 8-pin axial connector length 10 metres.
- RHFZ-KS.W08.10: cable with M12x1 8-pin angled connector length 10 metres.
- RHFZ-KS.G12.10: cable with M12x1 12-pin axial connector length 10 metres.
- RHFZ-KS.W12.10: cable with M12x1 12-pin angled connector length 10 metres.

OTHER STANDARD EXECUTIONS

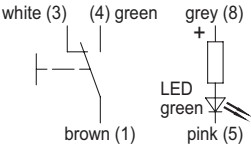
RH-VM-02: single complementary handle without push button and without valve RHVM-02.30.140.S11 (see page -).



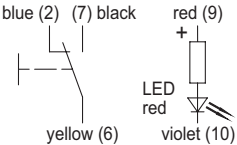
**RH-FG18-01
SWITCH**



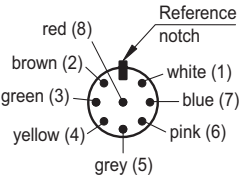
**RH-FG18-02
SWITCH 1**



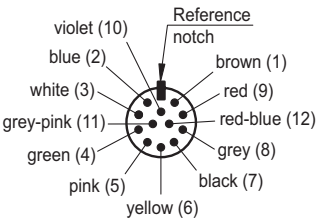
**RH-FG18-02
SWITCH 2**



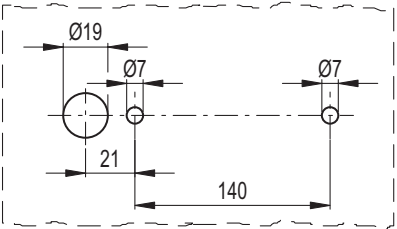
**CONTACT WIRING CABLE
8-PIN RH-FG18-01**

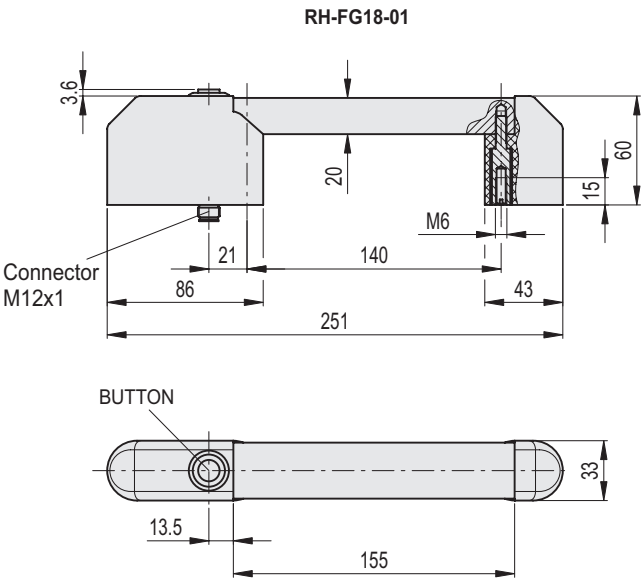


**CONTACT WIRING CABLE
12-PIN RH-FG18-02**



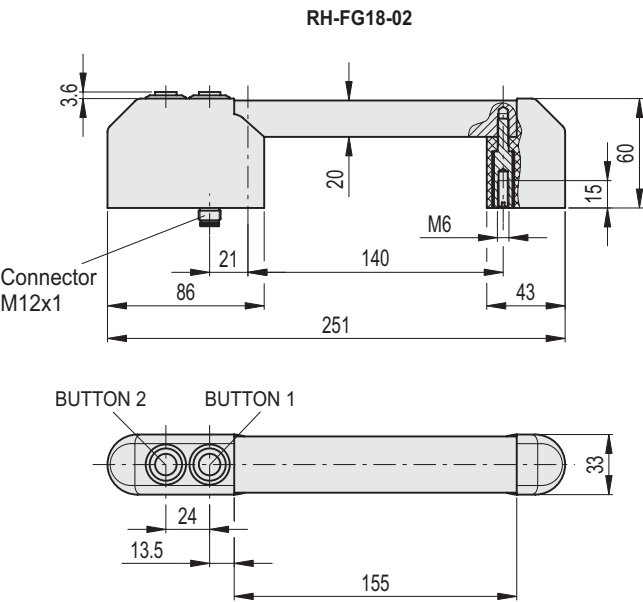
Drilling template





RH-FG18-01

Code	
RHFG18-01.140.11	480



RH-FG18-01

Code	
RHFG18-02.140.11	496